

CC155 CONCRETE CUTTER



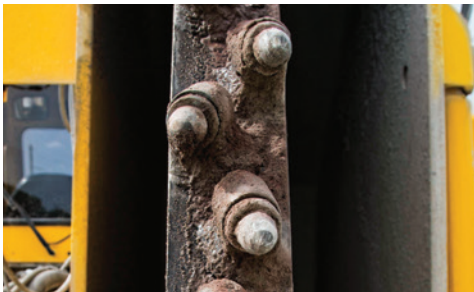
OPTIMIZED PRODUCTIVITY. The CC155 can help increase the efficiency of your job through its updated control system, compact design and geometric cutter head.



VANTAGE TRACK. Relax in the confidence that your investment is protected and your entire closed-loop hydrostatic system is covered with a 3-year/3000-hour Extended Care Service Program.



ENHANCED TRANSPORT SPEED. Efficiency is a key priority on many jobsites. The transport speed of the CC155 is 11 mph (17.7 kph) — allowing this machine to help deliver on efficiency.



POWERFUL PRECISION. The geometric design of the cutter wheel allows the cut to come from the center of the machine to give a more precise and powerful cut.



EFFICIENT DESIGN. The compact design of the CC155 allows this machine to get the job done effectively and efficiently in metropolitan areas and tight roadways while limiting a lane closure.



DIVERSE APPLICATIONS. This machine boasts success in many applications — including patch work and joint repair on interstates, streets and highways. Put it to work cutting longitudinal ditches for highway drains, airport lighting projects, airport guidance systems and demolition work — among many others.

CC155 CONCRETE CUTTER

GENERAL DIMENSIONS

Weight: 26,600 lb (9928.2 kg)

Length: 165" (419.1 cm)

Height: 120" (304.8 cm)

Width: 96" (243.8 cm)

Wheel base (centerline of axles): 97" (246.4 cm)

Ground clearance: 5" (12.7 cm)

Tread width: 79" (200.7 cm)

Water tank capacity: 200 gal (757.1 L)

ENGINE

Make/Model: John Deere 4045

Gross horsepower: 156 hp (116 kW)

Fuel tank capacity: 88 gal (333.1 L)

Operating range: 10.5 hours

Number of cylinders: 4

Cooling medium: Liquid

Air cleaner: Dry-type exhaust-aspirated

Electrical system: 24 DC

EPA certification family: Tier 4 Final (Stage IV)

GROUND DRIVE

Ground drive motors: Dual-path hydrostatic with dual series flow to four low-speed high-torque motors

Max transport speed: 11 mph (17.7 kph)

CAB

Air conditioner/Heater: Standard

AM/FM stereo with weather band: Standard

Pressurized/Filtered air: Standard

CUTTER WHEEL

Wheel diameter: 84" (213.4 cm)

Cutting width: 4.8" (12.2 cm)

Max cutting depth: 31" (78.7 cm)

Cutter wheel drive: Hydrostatic, one pump, one low-speed high-torque motor

Wheel thickness: 2" (5.1 cm)

OPTIONS

Foam-filled tires: Standard

Asphalt mill: 30" (76.2 cm) wide x 13" (33 cm) deep or 30" (76.2 cm) wide x 20" (50.8 cm) deep

NOTES:

Vermeer Corporation reserves the right to make changes in engineering, design and specifications; add improvements; or discontinue manufacturing at any time without notice or obligation. Equipment shown is for illustrative purposes only and may display optional accessories or components. Please contact your local Vermeer dealer for more information on machine specifications. Vermeer, the Vermeer logo and Equipped to Do More are trademarks of Vermeer Manufacturing Company in the U.S. and/or other countries. John Deere is a trademark of Deere & Company. © 2016 Vermeer Corporation. All Rights Reserved. Printed in the U.S.A. Please recycle.

