

Vermeer®



HG4000

HORIZONTAL GRINDER:

REIMAGINED



HG4000

HORIZONTAL GRINDER

For decades, Vermeer horizontal grinders have provided toughness and productivity, coming in a variety of configurations to suit large land-clearing, municipal waste and composting operations. As we look to the future needs of these jobsites, we set out to reimagine how horizontal grinders are designed, built and operated. The Vermeer HG4000 horizontal grinder is the result of these efforts.



SCAN THE QR CODE TO
SEE THE REIMAGINED
HG4000 IN ACTION

“The HG4000 builds on the legacy of Vermeer horizontal grinders that are known for efficiently processing logs and other organic matter into valuable end products. We are keeping what operators love most about these machines, while adding performance features that will translate to more productivity on the jobsite.”

– Jeff Bradley,
Vermeer Recycling
and Forestry product manager



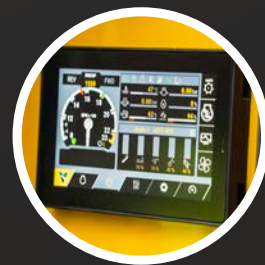
HG4000

4 ADVANTAGES OF THE HG4000



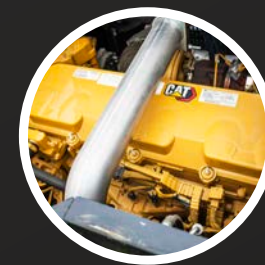
GRINDING EFFICIENCY

Optimal material feeding to process challenging materials and focus on grabbing the next load.



OPERATOR CONTROL

Technological features maximize operator control both on the machine and in the loader cab.



ENGINE PERFORMANCE

A 536-horsepower (399.7-kW) CAT C13B engine delivers ample power that has optimal job site noise levels.



EASE OF MAINTENANCE

Equipment designed for optimal machine access and automation help to streamline routine maintenance needs.

INSIDE THE HG4000 HORIZONTAL GRINDER

FEATURE	BENEFIT
Infeed table sidewalls	Optimize visibility of material in the infeed and minimize need for operator interaction with material.
Feed roller	Built with an aggressive design and equipped with power to pull in hard-to-feed material and help minimize blockages.
Feed opening	Large 42-inch by 60-inch (106.7-cm by 152.4-cm) feed opening minimizes the need for large material manipulation.
Series III duplex drum	Nine replaceable hammers and 18 bolt-on tips support optimal performance and ease of maintenance.
Maintenance-friendly design	Large access shields, ladders, drop-down platform, mill access at the front or the top and remote grease zerks help operators maintain the machine.
CAT engine	Process difficult material with a 536-horsepower (399.7-kW) CAT C13B engine that is backed by global support.
Intelligent feed system	Monitors engine speed and optimizes feed speeds to maximize available horsepower, resulting in maximum productivity. Only use when an operator is not required.

EQUIPPED WITH THE RIGHT TECHNOLOGY

Full-color display and controls

A 7-inch (17.78-cm) touchscreen provides machine data, operational settings and diagnostics.

Industry-leading, full-function remote

Operating distance of 300 feet (91 m) to adjust machine settings from the loader cab.

TAKE CONTAMINATION CONTROL TO THE NEXT LEVEL

Optional Damage Defense system

Detects certain metal contaminants prior to processing and stops the machine to help protect machine components.

Optional cross band magnet

Minimizes contaminants in end-product by magnetically removing contaminants that emerge from the grinder.

Vermeer Corporation reserves the right to make changes in product engineering, design and specifications; add improvements; or discontinue manufacturing or distribution at any time without notice or obligation. Equipment shown is for illustrative purposes only and may display optional accessories or components specific to their global region. Please contact your local Vermeer dealer for more information on machine specifications. Vermeer and the Vermeer logo are trademarks of Vermeer Manufacturing Company in the U.S. and/or other countries. CAT is a trademark of Caterpillar, Inc. © 2022 Vermeer Corporation. All Rights Reserved.

