

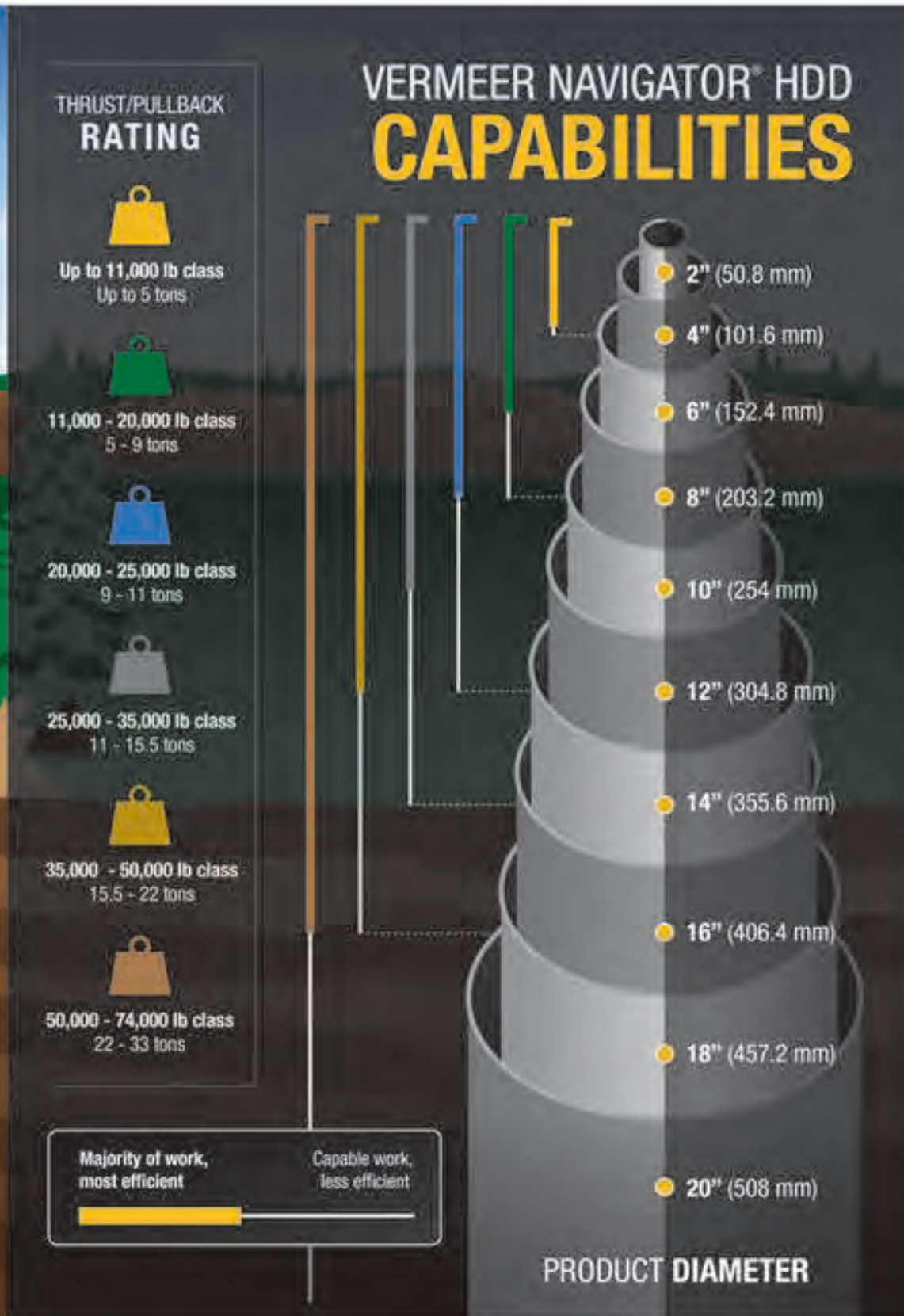
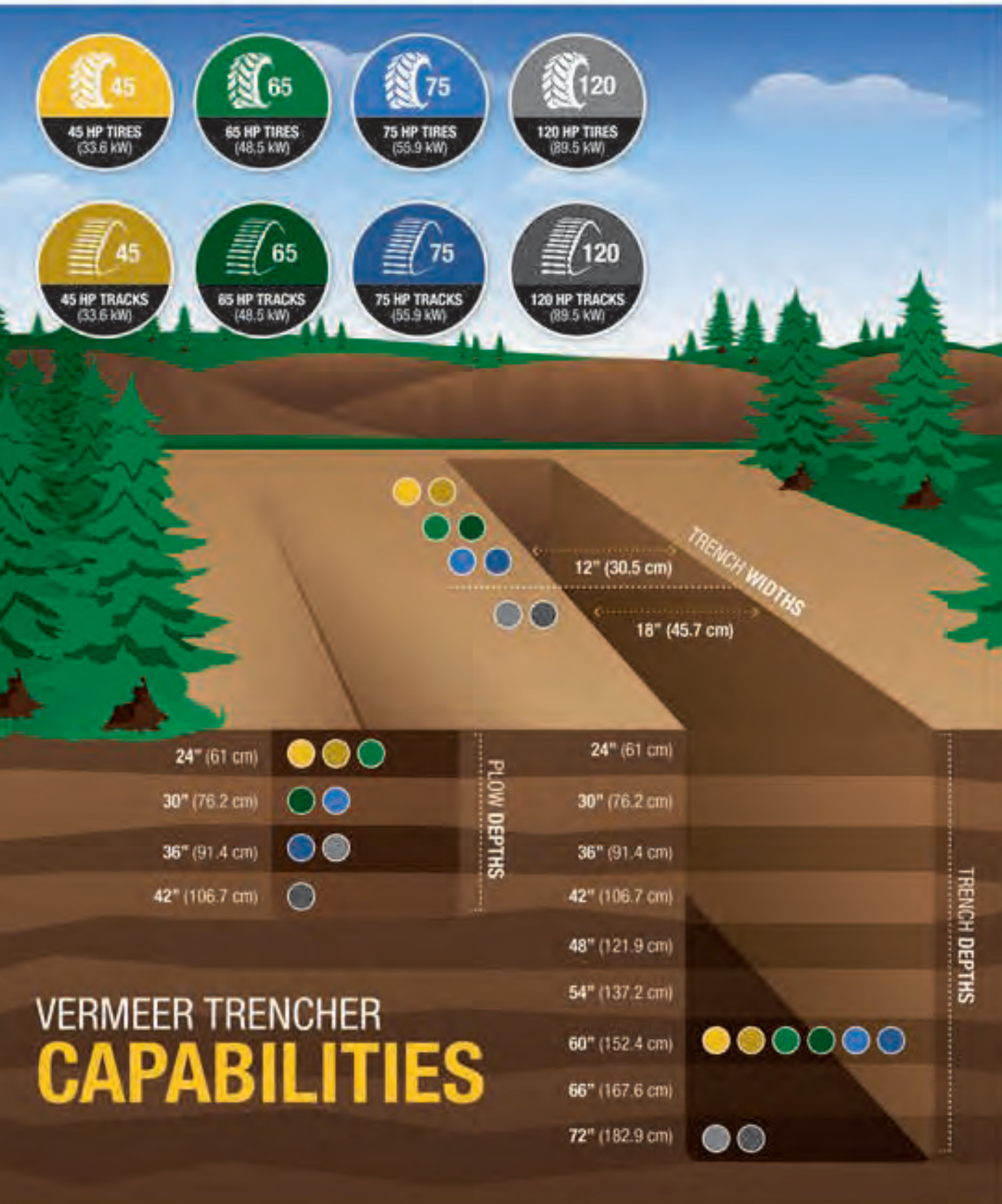


# UTILITY INSTALLATION

**Vermeer**



EQUIPPED TO  
DO MORE.™



## YOUR INFRASTRUCTURE SOLUTIONS PROVIDER

As the challenges posed by expanding populations grow, access to clean water, reliable electricity and utility services are a necessity. In order to meet the needs of rapidly developing societies, contractors and municipalities – around the world – need equipment that complete work efficiently and productively.

In more established locales, the demand for faster transfer of information is driving broadband and fiber installation, while a rapidly aging water/sewer infrastructure is receiving a failing grade and needs replacement.

With more than 60 years of experience serving the underground construction industry, the Vermeer lineup of equipment and software solutions continues to evolve in order to meet these challenges. With a regional and local dealer support network, utility installation contractors can rest assured there's a Vermeer team ready to support your next job – wherever it takes you.

## TABLE OF CONTENTS

1	Your Infrastructure Solutions Provider	9	Accessories
3	Open Cut Installation	13	Line Clearing
5	Trenchless Installation	15	Commitment to Our Customers

## KEEPING YOU ON TRACK

The Vermeer lineup of ride-on tractors offers versatility to contractors looking to install a variety of utilities and services in difficult ground conditions at the depths required by local municipalities efficiently and effectively. With a real commitment toward improving your productivity, Vermeer pioneered the innovative quad track system almost a decade ago, which helps increase tractive effort while minimizing jobsite disturbance.

### THE VERMEER ADVANTAGE

- An arsenal of attachments allows you to customize your ride-on tractor to the specification your jobsite requires.
- An integrated system display toggles through machine diagnostics, including engine rpm, fuel level, alternator voltage, engine coolant temperature and engine hours. When in either ground drive or using a rear attachment, the display indicates the percentage of the hydrostatic capacity being utilized, allowing the operator to conveniently monitor important machine functions.
- Common controls across the entire RTX lineup help operators become more efficient and productive, and help reduce training time as operators move from one tractor to the next.



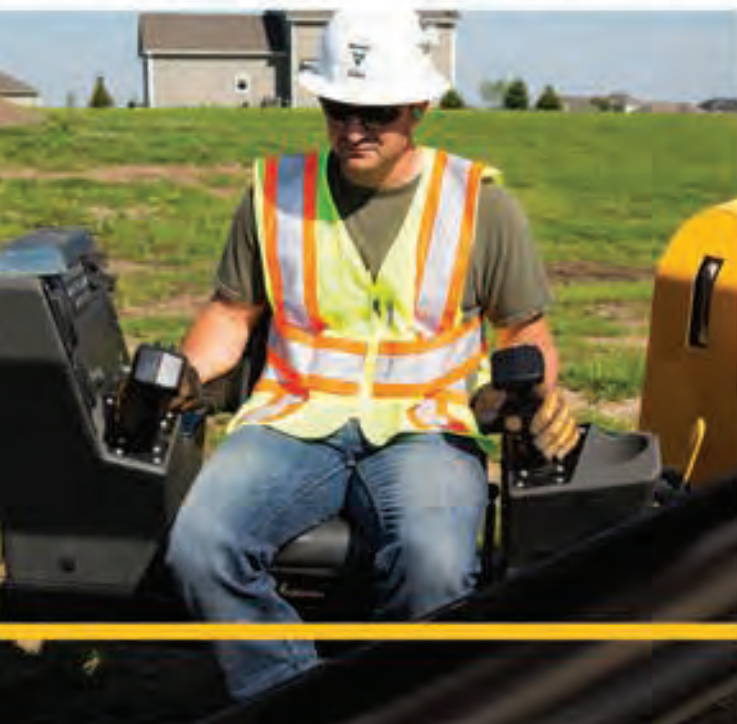


## SETTING THE STANDARD

As the underground construction industry has evolved over the last 20 years, Vermeer has responded with drills designed to meet the expanding needs of contractors. The S3 drill lineup embodies this commitment to your success – a redesigned hydraulic circuit makes more efficient use of horsepower, while the serious steps taken to increase speed, reduce sound and simplify controls help you take on the challenges of today's jobsites.

### THE VERMEER ADVANTAGE

- Common controls throughout the Vermeer Navigator drill lineup make it more convenient for operators to go from one drill to the next.
- Boasting efficient cycle times, S3 drills have been designed to maximize carriage, rotation, rod loading and tracking speeds to help your crew get the job done faster.
- Increase the length of your next bore and minimize loading time with the semi-automated add-a-rod feature. Add more rods [10' (3.1 m) length] to maximize jobsite productivity. Available on select models.

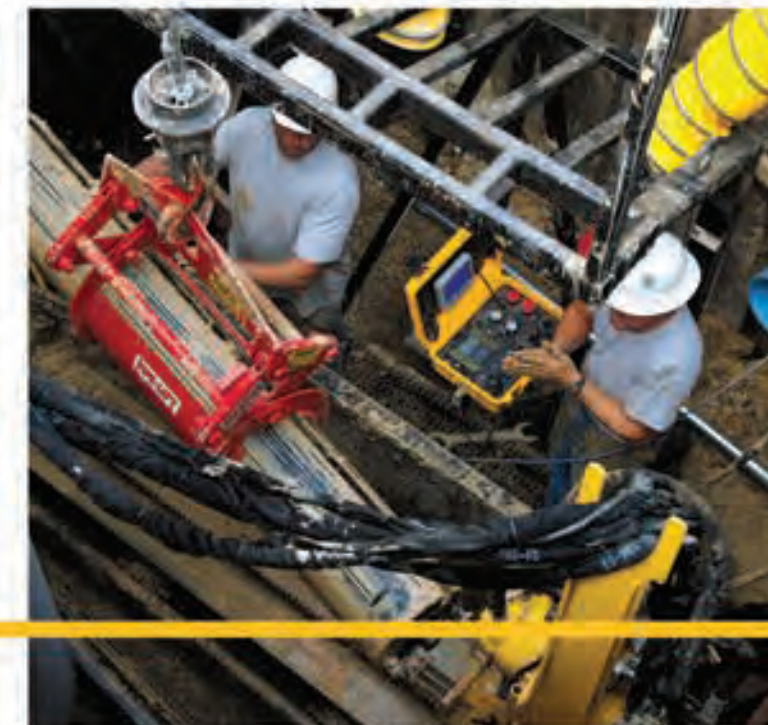


## PRECISION ON DISPLAY

The need for on-grade installation of water and sewer utilities is growing due to rapidly aging systems and the need for new infrastructure in developing areas. While some current trenchless products are capable of installing on-grade in varying ground conditions, they often lack the productivity of traditional open-cut methods. To fulfill contractors' need for a productive, precision on-grade trenchless method, Vermeer developed the AXIS® guided boring system, capable of achieving pinpoint accuracy.

### THE VERMEER ADVANTAGE

- The operator console is designed to centralize control of multiple components into a simple, easy-to-use interface and includes the target display monitor, parameter display, drill head steering control, thrust/pullback and rotation control.
- A closed-circuit camera integrated into the drill head allows the operator to constantly monitor the process of the bore onscreen, and allows the operator to make corrective steering adjustments if needed.
- The system is compatible with a varying number of pipe options and allows project owners to decide product type, rather than having to choose what the system allows.





## MAINTAINING YOUR JOBSITE

Vermeer partners with two of the trenchless industry's leading vacuum excavation systems manufacturers – Vac-Tron and McLaughlin – to provide you the very best in visual utility location and site cleanup options. Vacuum excavation systems can serve double-duty on jobsites – offering invaluable ways to help keep your jobsite maintained and helping to avoid damage to existing utilities by offering visual verification of utility placement.

### THE VERMEER ADVANTAGE

- Low-profile and practical design considerations make vacuum excavation systems an indispensable addition to your fleet.
- Hydraulically operated rear doors offer convenience and security, minimizing the possibility of waste leakage.
- A variety of capacity and mounting options allow you to choose the system best suited to your operation.

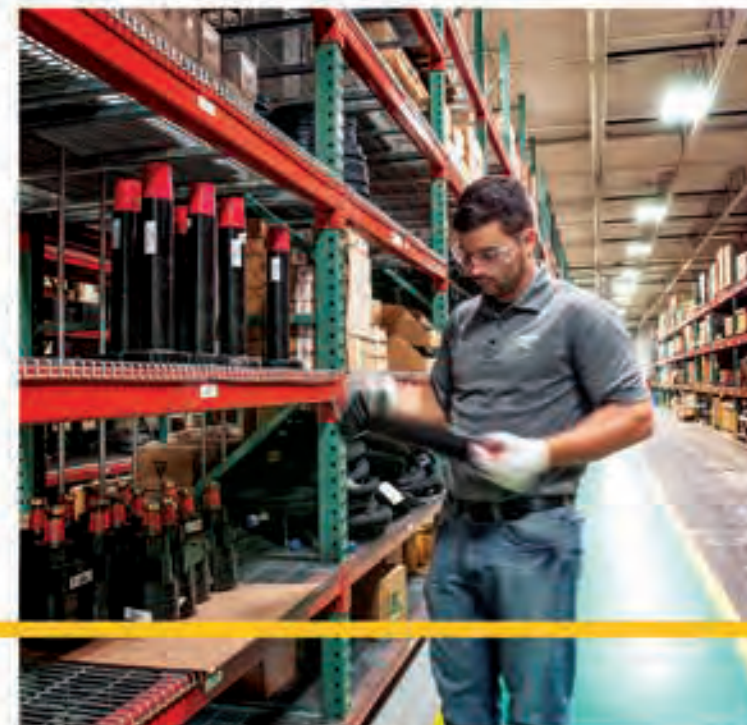


## IT TAKES MORE THAN A DRILL

Vermeer knows your toughest jobs require equally tough tools. Rely on the BORESTORE® HDD tooling and accessories warehouse team for the tooling solutions you need to take on a wide range of ground conditions. Use the Vermeer family of drilling fluid mix systems to quickly combine water with additives to create the right consistency for your downhole fluid. Vermeer piercing tools are well-suited to performing relatively short trenchless installation projects including gas, cable, electric, water and irrigation systems.

### THE VERMEER ADVANTAGE

- The BORESTORE team of tooling experts stand ready to assist you with bits, reamers and beyond for your most difficult projects.
- Vermeer mix systems have been designed to pair with our lineup of drills and for easy transport, helping to minimize hauling costs.
- Piercing tools provide a compact, fast and economical solution for short to medium length [50' (15.2 m)] trenchless installations.



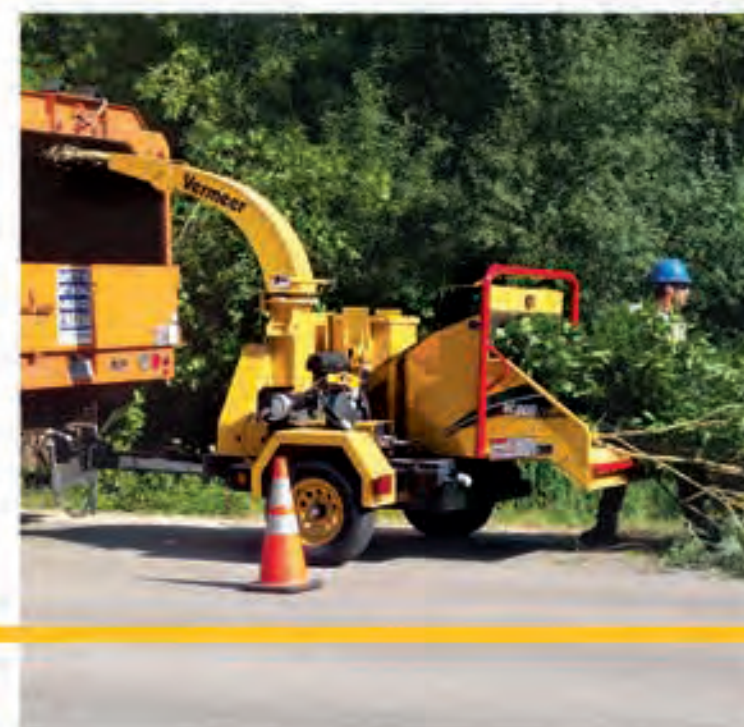


## CLEARING THE WAY

Vermeer brush chippers are key components in vegetation management strategies that keep transmission lines and right-of-ways clear. Day in and out Vermeer brush chippers are built tough enough to stand up to the harsh conditions your crew face. Multiple drum and horsepower configurations allow for integration into your fleet of one or one hundred.

### THE VERMEER ADVANTAGE

- The SmartFeed feed sensing control system enhances productivity by stopping and reversing the feed roller to optimally process large, hardwood material.
- Ecolde™ engine control system saves fuel and reduces noise by automatically reducing engine rpm after one or five minutes of inactivity. Available on select models.
- The upper control bar and lower feed stop bar provide an added level of operator protection by making it possible for the operator to shut off the feed either intentionally or automatically in an emergency situation.



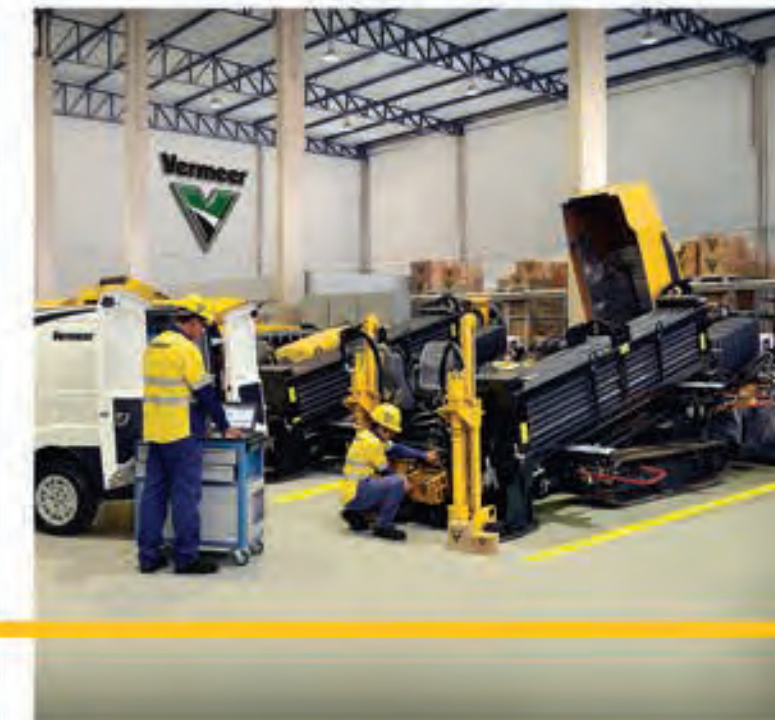
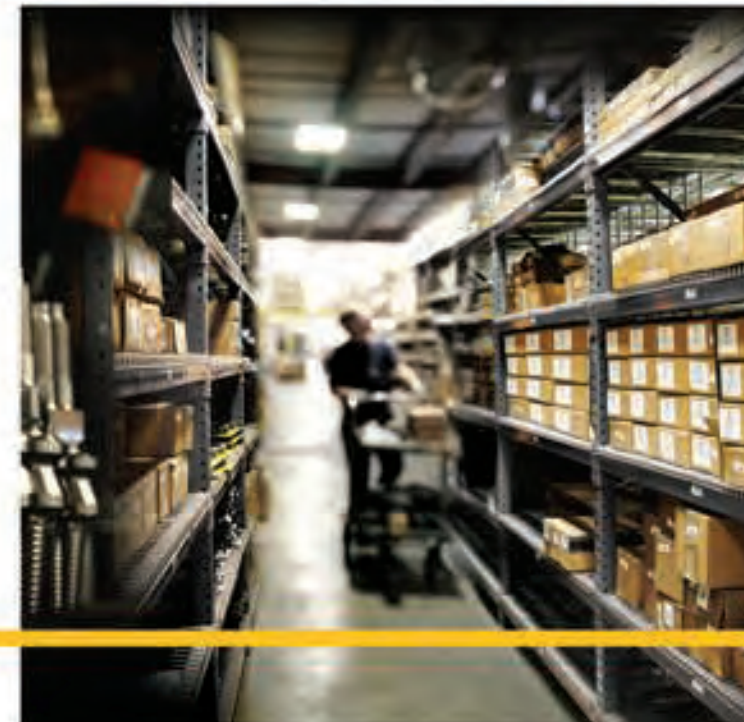


## YOUR JOBSITE ALLY

Local support that knows your operation is essential to your jobsite success. Committed to helping find ways to positively impact your productivity, our parts, support and tooling teams are experts striving to better serve you, while innovative programs such as Vermeer Confidence Plus™ asset protection system and Job Ready™ service contracts allow you to make the most of your investment throughout the life of your machine.

### THE VERMEER ADVANTAGE

- Our parts support team members are dedicated to your jobsite success, and pride themselves on the ability to deliver technical assistance and spare parts quickly.
- With customer support and protection tools such as Vermeer Confidence Plus and Job Ready, safeguarding your operation and protecting your equipment assets has never been easier. Available on select HDD models.
- Our service support teams are invested in your success and ready to go the extra mile at jobsites around the world.



# COMMITMENT TO OUR CUSTOMERS

When it's on the line, you require a partner who can provide the support and technology solutions to help keep your job productive. Vermeer is ready to stand behind your next project – no matter where it takes you – with local expertise and dealer support.

## THE VERMEER ADVANTAGE

- Let InSite® Productivity Tools help you make key decisions on your Vermeer fleet of equipment. Available on select Vermeer models.
- The Vermeer BoreAid™ design tool helps you perform your next bore efficiently by taking into account ASTM/PRCI standards and consistent HDD planning methods.
- The interactive, full-color, touchscreen Aurora™ touchscreen display provides HDD operators access to information and tools that lets them complete their drilling activities more efficiently. Available on select Vermeer models.



Your personalized equipment and support plan awaits.



Your Productivity Advisor



**Vermeer**



**EQUIPPED TO  
DO MORE.™**

Equipment shown is for illustrative purposes only and may display optional accessories or components. Please contact your local Vermeer dealer for more information on machine specifications.

Vermeer Corporation, McLaughlin Group Inc. and American Manufacturing and Machine Co. each reserves the right to make changes in engineering, design and specifications; add improvements; or discontinue manufacturing at any time without notice or obligation.

Vermeer, the Vermeer logo, Equipped to Do More, EcoTide, Navigator, AOS, BORESTORE, Vermeer Confidence Plus, Job Ready, InSite and BoneAid are trademarks of Vermeer Manufacturing Company in the U.S. and/or other countries. McLaughlin is a trademark of McLaughlin Group, Inc. Vac-Ton is a trademark of American Manufacturing and Machine Co. Aurora is a trademark of Digital Control Inc. © 2014 Vermeer Corporation. All Rights Reserved.