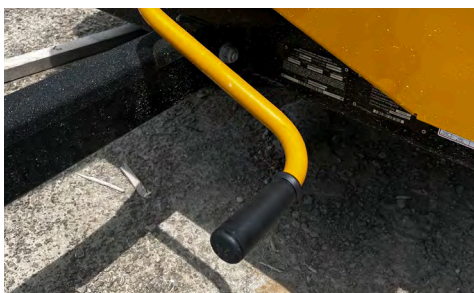


BC700XL BRUSH CHIPPER



MANUAL CLUTCH. Manual clutch engagement transfers belt tension from the disk to the engine smoothly to help prevent premature wear.



25 HP (18.6 KW) EFI ENGINE performs well during cold-weather starts, reduces occurrence of engine flooding and provides improved fuel economy over comparable carbureted gas engines.



THE LARGE INFEED OPENING 6 in x 8 in (15.2 cm x 20.3 cm) makes feeding irregular material easier and decreases the amount of saw cuts needed prior to feeding the chipper.



THE EXCLUSIVE SMARTFEED CONTROL SYSTEM from Vermeer helps increase operator productivity and reduces strain on vital engine parts, as engine rpm is monitored and feed rollers are controlled.



ELECTRONICALLY SWITCHED BOTTOM FEED STOP BAR is strategically located to make it possible for the operator's leg to strike the bar and shut off the feed mechanism either intentionally or automatically in an emergency situation increasing operator safety while feeding material.



THE WIDE AXLE offers an ample footprint at the axle for side-to-side stability; additionally enhances transportability and visibility while backing up.

BC700XL BRUSH CHIPPER

GENERAL

Length (feed table up, tongue in): 115 in (292.1 cm)

Length (feed table down, tongue extended): 136 in (345.4 cm)

Width: 71 in (180.3 cm)

Height: 102 in (259.1 cm)

Weight: 1,800 lb (816.5 kg)

ENGINE

Make and model: Kohler ECH740

Number of cylinders: 2

Gross horsepower (max): 25 hp (18.6 kW)

Torque (max): 41.7 ft-lb (56.5 Nm)

Fuel tank capacity: 6 gal (22.7 L)

Fuel type: Gasoline

Recommended oil: Kohler oil or API CH4/SJ

FEED SYSTEM

Feed roller dimension: 10 in (25.4 cm)

Number of knives: 10

Feed speed: 49.4 ft/min

Infeed table width: 41.2 in (104.6 cm)

Infeed Table Length : 30.2 in (76.7 cm)

Infeed Throat Capacity: 6 in x 8 in (15.2 cm x 20.3 cm)

SAFETY SYSTEM

Bottom feed stop bar: Standard

Reset method: Dual green hold-to-run buttons

Positions: Four position – e-stop, forward, stop, (reverse)

CUTTING SYSTEM

Material capacity: 6 in (15.2 cm)

Width: 8 in (20.3 cm)

Thickness: 1.25 in (3.2 cm)

Diameter: 23.9 in (60.7 cm)

Speed: 1,748 rpm

Number of knives: 2

Useable edges: 2

DISCHARGE SYSTEM

Chute height: 97.16 in (246.8 cm)

Chute rotation angle: 240°

Rotation type: Manual

ELECTRICAL SYSTEM

System voltage: 12 Volt

Battery: Group 26, 400 CCA

Switches: Hold-to-run, sensitivity selector

CHASSIS

Hitch type: 2 in (5.1 cm) ball coupler

Fender description: .1 in (2.5 mm) steel bolt-on

Axle/Suspension: 2,000 lb (907.2 kg) torsion axle

Capacity: 2000 lb (907.2 kg)

Tires: ST185/80D13 load range D

Wheels: 13 x 5, bolt circle 5 on 4.5

Axle/Suspension: 2000lb (907.2 kg) torsion axle

Brake type: Electric optional

Trailer light type: LED

OPTIONS

Extended warranty

Special paint

Planned maintenance

Vermeer Confidence Plus® Asset Protection Program

Vermeer Corporation reserves the right to make changes in engineering, design and specifications; add improvements; or discontinue manufacturing at any time without notice or obligation. Equipment shown is for illustrative purposes only and may display optional accessories or components. Please contact your local Vermeer dealer for more information on machine specifications. Vermeer, the Vermeer logo, Equipped to Do More and Confidence Plus are trademarks of Vermeer Manufacturing Company in the U.S. and/or other countries. Kohler is a trademark of Kohler Co. © 2023 Vermeer Corporation. All Rights Reserved. Printed in the U.S.A. Please recycle.



EQUIPPED TO
DO MORE.™