

RTX1250i2

RIDE-ON TRACTOR



IMPROVED PRODUCTIVITY. The RTX1250i2 offers a productivity advantage with classic and newly-added technology like TrenchSense™ electronic control system, Ecolde™ engine control system, Productivity Zone and Auto Plunge.



OPTIONAL REMOTE CONTROL. Utilize an optional remote control for convenient maintenance and trailer loading and unloading.



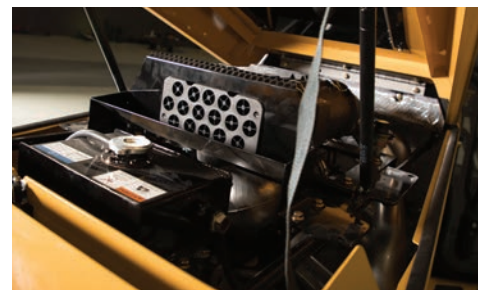
VERMEER TELEMATICS-READY. Stay in-sync with and get optimal Vermeer telematics out of your machine by adding Vermeer telematics to this tractor.



INTELLIGENT i2 ATTACHMENTS. Intelligent i2 attachments offer reduced time switching out attachments and setting operational parameters.



ENHANCED COMFORT. The RTX1250i2 boasts a quiet ride, convenient controls and an isolated, cushioned operator's platform. An optional, all-new climate-controlled cab is also available.



POWER FOR EVERY JOB. The RTX1250i2 is powered by a 127 hp (95 kW) Deutz TCD3.6L diesel engine which offers efficient power for working in difficult ground conditions.

RTX1250i2 RIDE-ON TRACTOR

GENERAL DIMENSIONS AND WEIGHTS

Length (basic tractor, rubber tires): 11.6 ft (3.5 m)

Length (basic tractor, tracks): 12.4 ft (3.8 m)

Width (rubber tires): 86 in (222.2 cm)

Width (tracks): 92.5 in (234.9 cm)

Height (transport, 3-post): 115 in (292.1 cm)

Height (transport, cab): 115 in (292.1 cm)

Weight (basic tractor, rubber tires): 11,580 lb (5,253 kg)

Weight (basic tractor, tracks): 16,160 lb (7,330 kg)

Weight (cab, rubber tires): 12,630 lb (5,729 kg)

Weight (cab, tracks): 17,210 lb (7,806 kg)

Roll Over Protection Structure: 40,000 lb (18,143.7 kg)

ENGINE OPTION ONE

Make and model: Deutz TCD3.6L

Gross horsepower: 127 hp (95 kW)

Number of cylinders: 4

Cooling method: Liquid

Fuel type: Ultra-low sulfur diesel

EPA certification family: Tier 4 Final (Stage V)

Maximum engine rpm: 2300 rpm

Idle speed: 1000 rpm

Torque (maximum): 369 lb-ft (5000 Nm)

Guaranteed sound power: 104 dB(A)

FLUID CAPACITIES

Fuel tank: 44 gal (166.6 L)

Hydraulic tank: 31.6 gal (119.8 L)

GROUND DRIVE - RUBBER TIRE

Maximum transport speed (fwd/rev): 10.2 mph (16.4 km/h)

GROUND DRIVE - RUBBER TRACKS

Maximum transport speed (fwd/rev): 10.1 mph (16.3 km/h)

AXLE OPTIONS

Front axle/rear axle type: Steerable planetary with hydraulic 100 percent differential lock

Axle load rating (static, per axle): 49,458 lb (22,433.8 kg)

Turning Radius (rubber tires, front steer only): 40 ft (1219 cm)

Turning Radius (rubber tires, front and rear steer): 23 ft (701 cm)

Turning Radius (rubber tracks, front steer only): 40 ft (1219 cm)

Turning Radius (rubber tracks, front and rear steer): 26 ft (792 cm)

FEATURES

Cab: Optional

Telematics-ready

Service brake type: Hydrostatic

Parking brake type: Spring-applied hydraulic release

Quad tracks: Four independent rubber tracks bolt on to existing axle hubs

ATTACHMENT OPTIONS

Front options:

Backhoe

Backfill blade

Reel carrier

Back options:

Vibratory plow

Rockwheel

Sliding offset rockwheel

Sliding offset trencher

Trencher

NOTES:

Vermeer Corporation reserves the right to make changes in engineering, design and specifications; add improvements; or discontinue manufacturing at any time without notice or obligation. Equipment shown is for illustrative purposes only and may display optional accessories or components. Please contact your local Vermeer dealer for more information on machine specifications. Vermeer, the Vermeer logo, Equipped to Do More and TrenchSense are trademarks of Vermeer Manufacturing Company in the U.S. and/or other countries. Deutz is a trademark of Klockner-Humboldt-Deutz Corporation. © 2023 Vermeer Corporation. All Rights Reserved. Printed in the U.S.A. Please recycle.

Vermeer



EQUIPPED TO
DO MORE.