

# LS3600

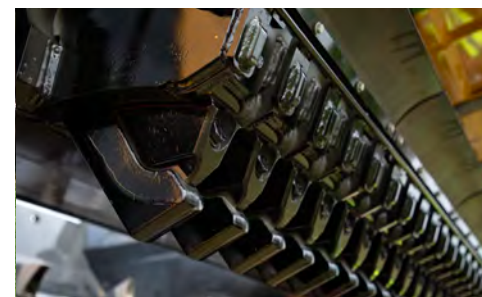
## LOW SPEED SHREDDER



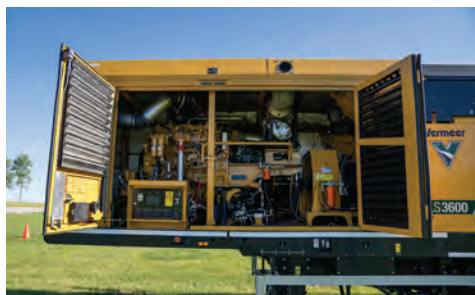
**FULL ROTOR ACCESS.** The patent-pending, hydraulically operated side door provides full exposure to the rotor, comb and belly conveyor to minimize maintenance time. The service area has been designed with safety in mind to allow you to perform maintenance without overhead obstructions.



**FULL-FUNCTION REMOTE.** Adjust machine functions, capture machine data and diagnose equipment fault codes – all from the full-function remote. You can spend more time in the cab throughout the day, monitor machine health and make real-time adjustments remotely, allowing you to keep things running efficiently.



**DOUBLE-ENDED COMB TEETH.** The LS3600 has individual bolt-in comb teeth that have two usable edges. This helps extend the life of your teeth and minimize wear costs.



**ENGINE BAY ACCESS.** The LS3600 gives you unparalleled access into the machine. The maintenance-friendly and highly accessible engine bay design includes large access doors, multiple ladder points and a large service platform to help with ease of maintenance and serviceability.



**MECHANICAL DRIVELINE AND PROTECTION.** Equipped with a reversible mechanical transmission for an efficient power transfer that maximizes productivity. A torque limiter automatically disengages the drive when max torque is experienced – helping protect critical machine components.



**SERVICEABLE BELLY CONVEYOR.** The belly conveyor can be removed without detaching the discharge conveyor – allowing for minimally invasive service.

# LS3600 LOW SPEED SHREDDER

## GENERAL DIMENSIONS

Maximum length (transport): 10.2 m (33.5 ft)

Maximum width (transport): 2.5 m (8.2 ft)

Maximum height (transport): 3.5 m (11.6 ft)

Maximum weight: 33,000 kg (72,752 lb)

## ENGINE

Make and model: CAT C13B T4F/STAGE V

Gross horsepower: 340 kW (456 hp)

Transmission type: Reversing dual clutch

Sound power: 108.2 dB(A)

## INFEED HOPPER SYSTEM

Infeed hopper capacity 7.8 m³ (10.2 yd³)

Feed opening: 225 cm wide x 370.2 cm long (86 in w x 145.75 in l)

## ROTOR

Tip diameter: 103.3 cm (39.5 in)

Rotor length: 3.1 m (10.1 ft)

Rotor speed: 30 rpm

Number of tips: 21

Tip types: Tall/short

## BELLY CONVEYOR SYSTEM

Length: 4.8 m (16 ft)

Belt design: Poly-nylon or steel mesh option

## DISCHARGE CONVEYOR SYSTEM

Width: 121.9 cm (48 in)

Load height: 2.43 m - 4.3 m (8 ft - 14 ft)

## CONTROLS

Stationary: Side-mounted multicolor touch screen

Remote: Multifunction with build in LCD

Remote range (maximum): 300 ft (91.4 m)

## OPTIONS

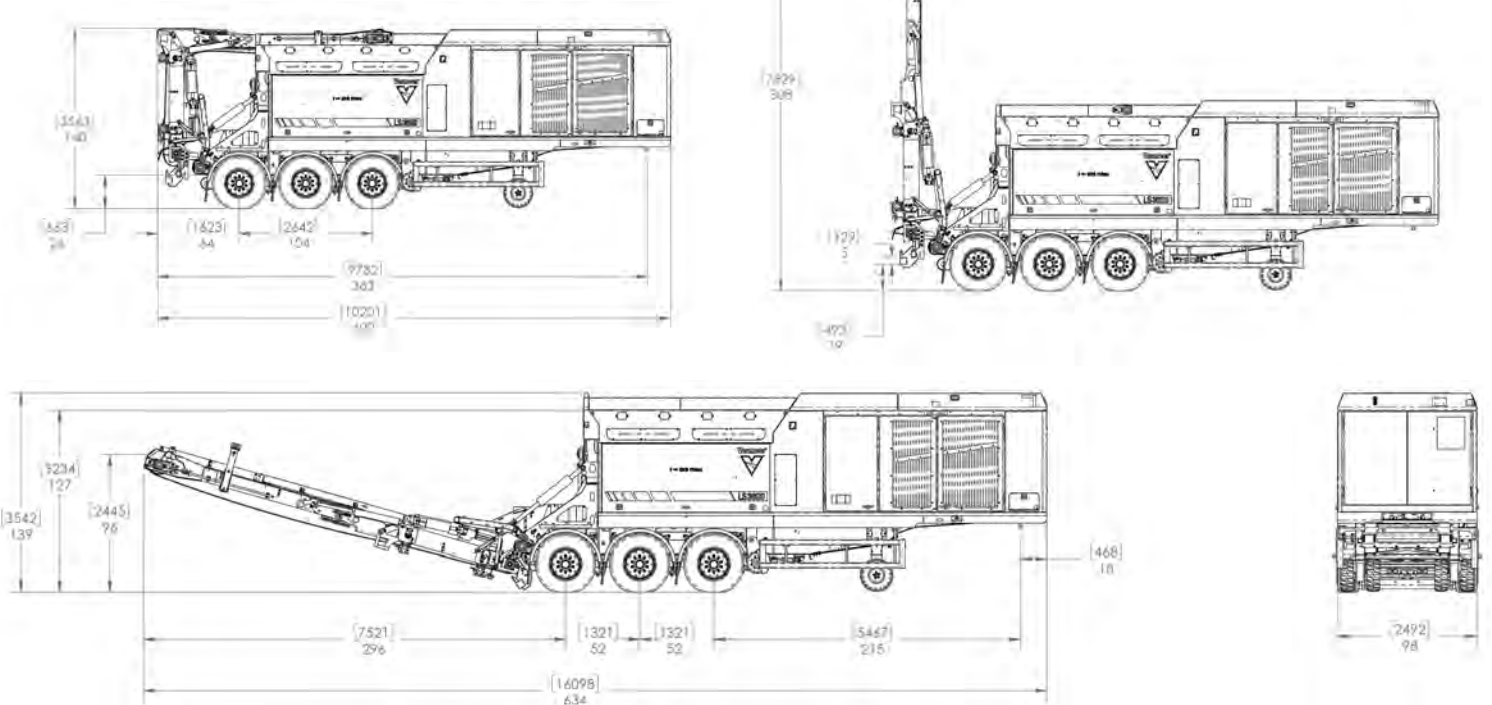
Two (2) tip options

Overband magnet

Dust suppression system

Folding rear hopper extension

Special paint



Vermeer Corporation reserves the right to make changes in engineering, design and specifications; add improvements; or discontinue manufacturing at any time without notice or obligation. Equipment and depictions shown are for illustrative purposes only and may display optional accessories or components specific to their global region. Please contact your local Vermeer dealer for more information on machine specifications. Vermeer, the Vermeer logo and Equipped to Do More, SmartSweep and Vermeer Confidence Plus are trademarks of Vermeer Manufacturing Company in the U.S. and/or other countries. CAT is a trademark of Caterpillar, Inc. © 2024 Vermeer Corporation. All Rights Reserved.

